

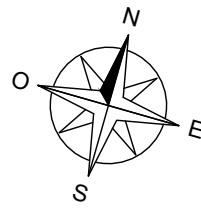
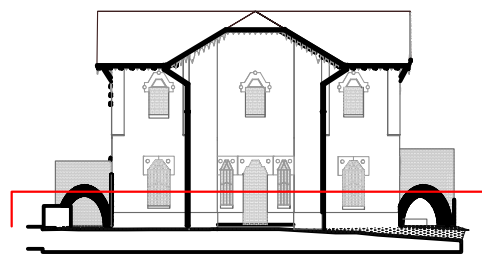
VALORIZZAZIONE E RESTAURO DELL'EDIFICIO "EX POLIGONO DI  
TIRO" SITO IN LOCALITA' BERSAGLIO A COSTA VOLPINO (BG)




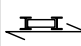

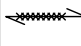

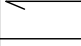

**DOC.05**

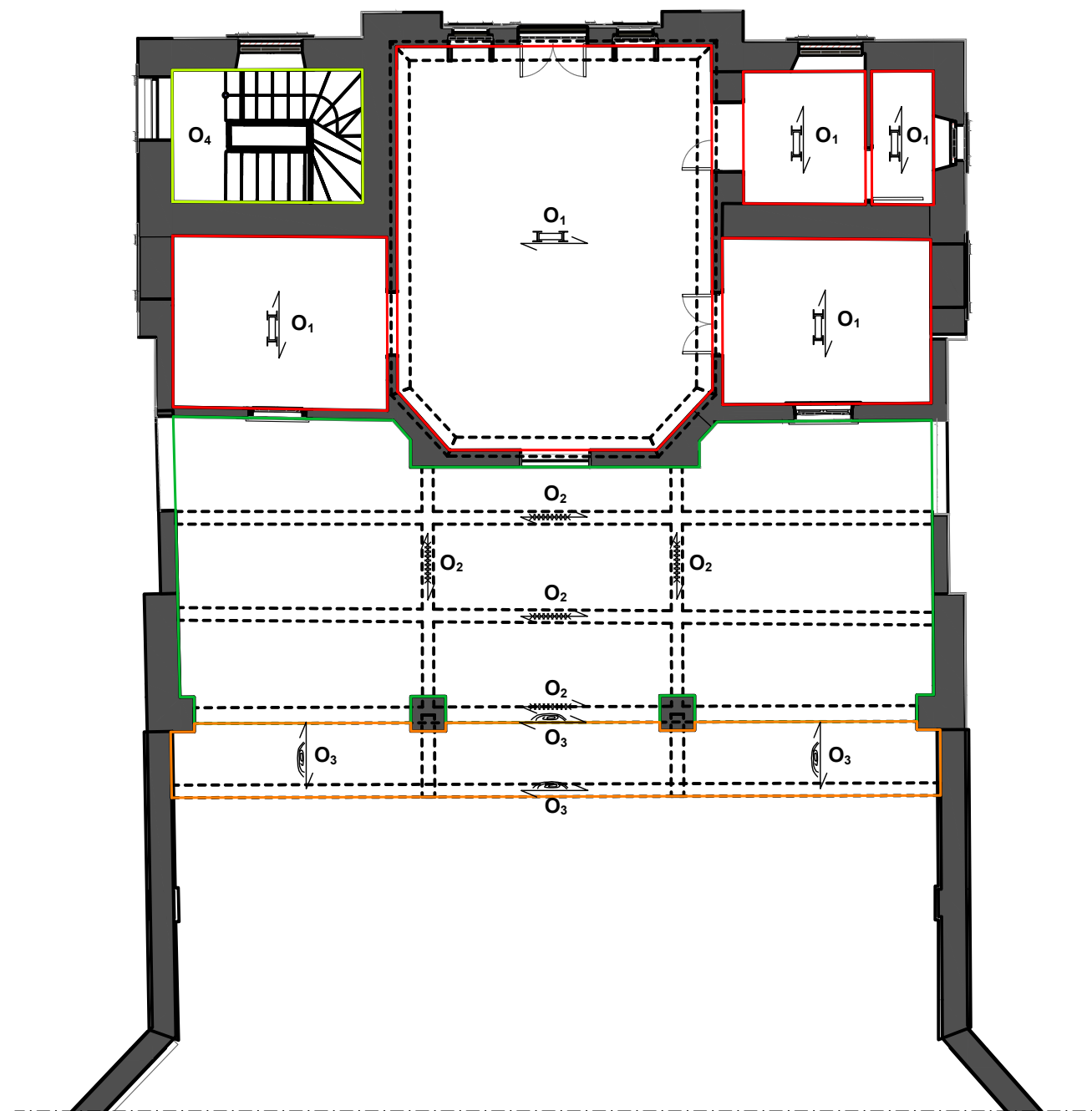
**RILIEVO TECNOLOGICO E COSTRUTTIVO**

KEYPLAN

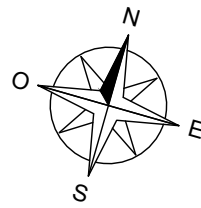
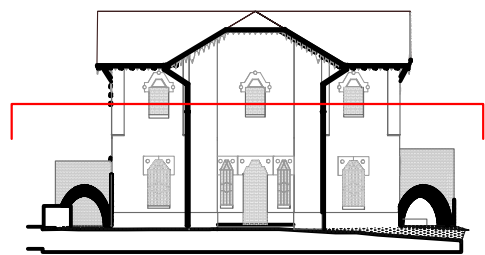


TECNOLOGICO SOLAI COPERTURA PIANO TERRA - SCALA 1:100



		<b>O<sub>1</sub></b> = SOLAIO IN PURTELLE E TAVELLONI
		<b>O<sub>2</sub></b> = SOLAIO IN C.A. a soletta piena e doppia orditura di travi in c.a.
		<b>O<sub>3</sub></b> = TETTOIA IN LEGNO doppia orditura con assito in tavole di legno
		<b>O<sub>4</sub></b> = SCALE IN C.A.



KEYPLAN

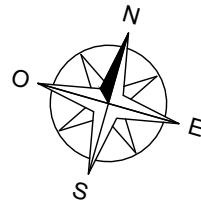
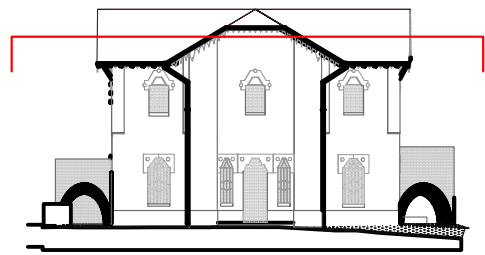


TECNOLOGICO SOLAI COPERTURA PIANO PRIMO – SCALA 1:100




  O<sub>1</sub> = SOLAIO IN LEGNO singola orditura con travi in legno + tavelloni in laterizio

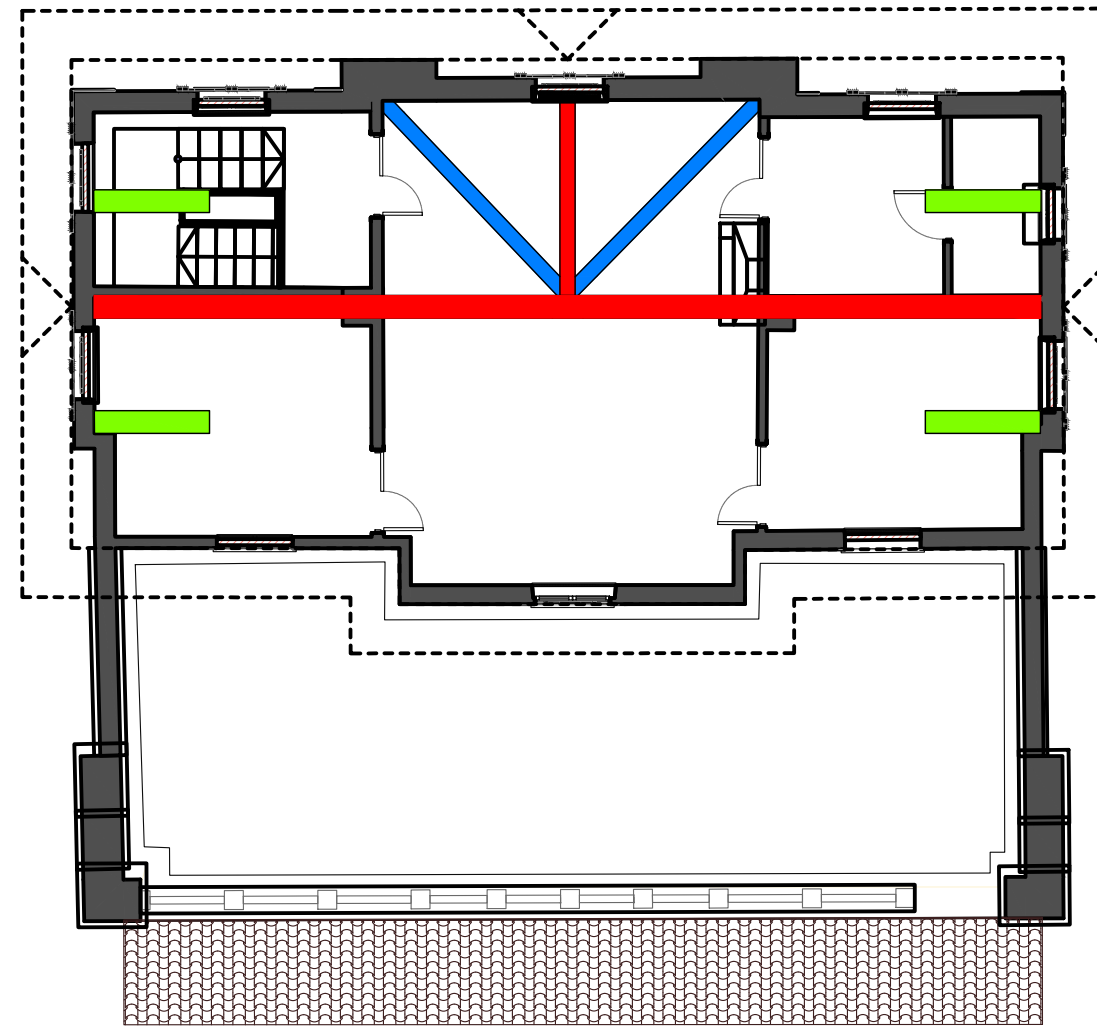


KEYPLAN

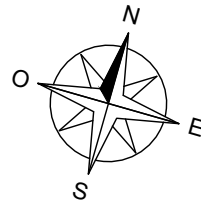
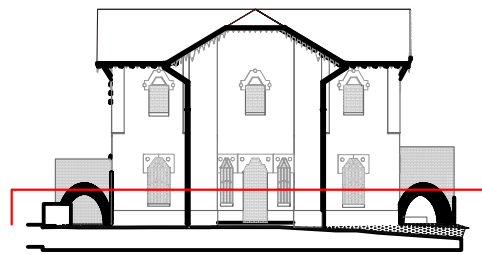


SCHEMA ORDITURE DI COPERTURA - SCALA 1:100


LEGENDA ELEMENTI STRUTTURALI DI COPERTURA	
	ELEMENTO LIGNEO DI COLMO
	ELEMENTO LIGNEO TIPO TERZERA
	ELEMENTO LIGNEO TIPO CANTONALE

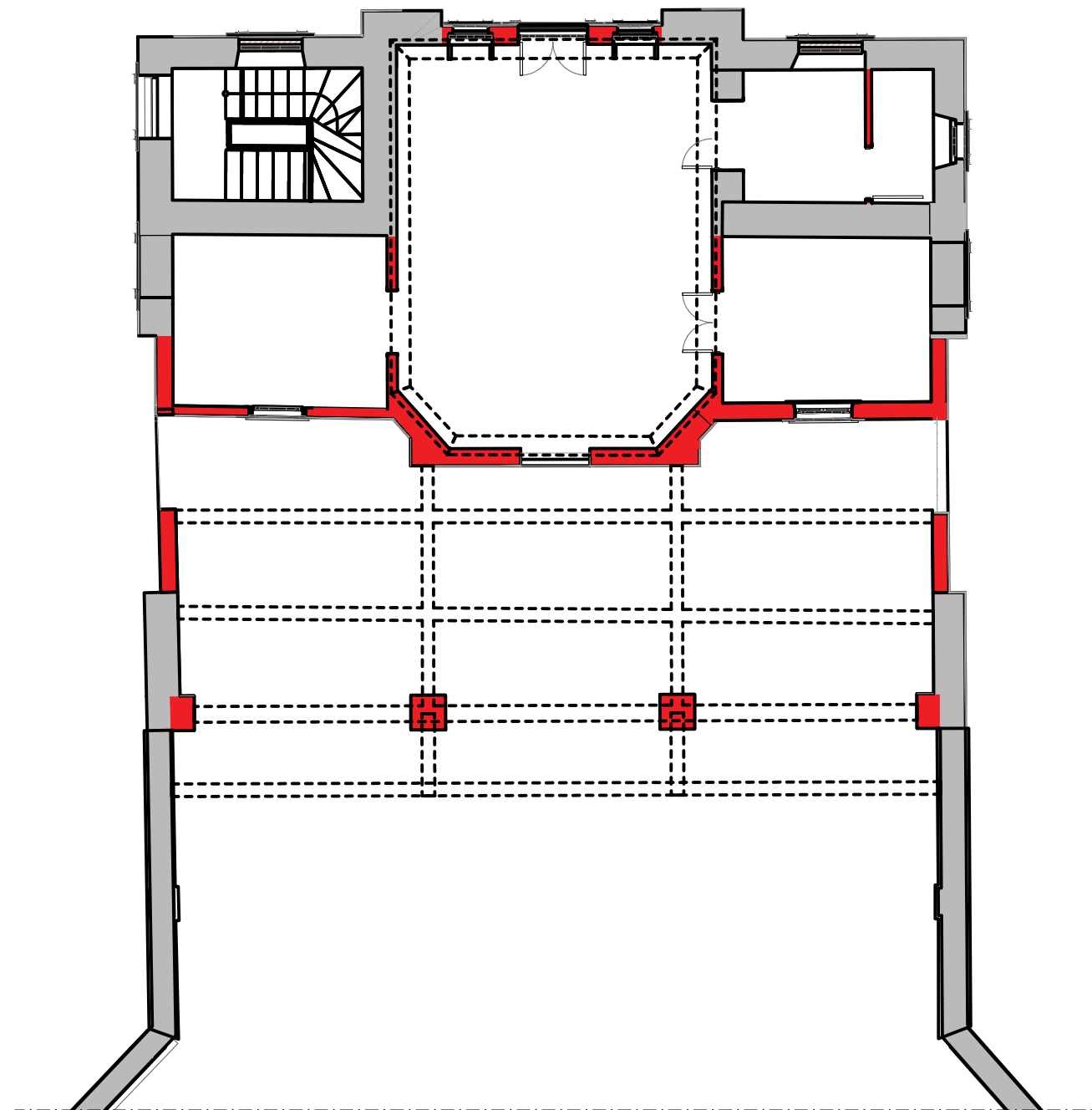


KEYPLAN

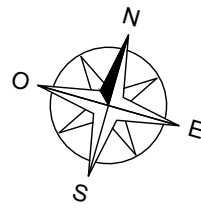
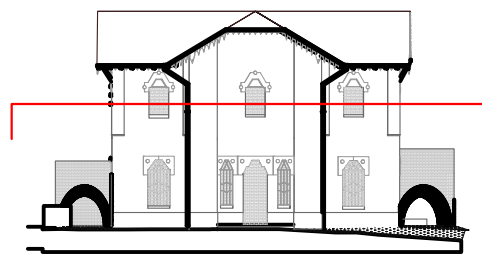


TECNOLOGICO MURATURE PIANO TERRA - SCALA 1:100




	MURATURA MISTA IN PIETRA E MATTONE PIENO
	MURATURA IN MATTONI PIENI



KEYPLAN



TECNOLOGICO MURATURE PIANO PRIMO - SCALA 1:100

	MURATURA MISTA IN PIETRA E MATTONE PIENO
	MURATURA IN MATTONI PIENI
	PARAPETTO IN MATTONI PIENI con parte sommitale in calcestruzzo

